



Flat Sheet.....	1
Galvanized Flat Sheet.....	1
G90 Galvanized Flat Sheet.....	2
Paintlock Flat Sheet.....	3
Aluminum Flat Sheet.....	3
Stainless Flat Sheet.....	3
Cold Rolled Flat Sheet.....	3
Sheet Metal Pipe.....	4
Snaplock Pipe - 10FT.....	4
Buttonlock Pipe - 10FT.....	4
Snaplock Pipe - 5FT.....	5
Buttonlock Pipe - 5FT.....	6
Snaplock Pipe - 2FT.....	7
Adjustable Elbow.....	8
Dampers.....	9
Manual Volume Damper.....	9
Round Damper Blade w/Quadrant.....	9
Round Damper Blade w/Quadrant - 2 Sides.....	9
Round Dampered Pipe Sleeve.....	9
Pipe Vent Connector.....	10
Duct Boots.....	11
Angle Boot.....	11
Straight Boot.....	12
End Boot.....	13
Stack Boot.....	14
Plated Angle Ceiling Boot.....	14
Plated Straight Ceiling Boot.....	14
Pipe Caps.....	15
Duct Reducers.....	16
Plug Reducer.....	16
Tapered Reducer.....	17
Duct Wyes & Tees.....	18



Manufacturer and Wholesaler of Sheet Metal, HVAC and Specialty Products

With Convenient Locations in Wichita, Omaha, Denver, Kansas City, Lincoln, and Des Moines



Branch Wye.....	18
Tee Joint.....	18
90° Saddle Tee.....	18
Joist Panning.....	19
Duct.....	20
Duct Top/Bottom.....	20
Duct Side.....	20
Duct L-Section - 2FT.....	20
Duct L-Section - 3FT.....	20
Duct L-Section - 4FT.....	21
Duct L-Section - 5FT.....	22
Raw Duct L-Section - 5FT.....	23
Duct L-Section - 8FT.....	24
Raw Duct L-Section - 8FT.....	25
Connectors.....	26
S-Lock Connector.....	26
Standing S-Lock Connector.....	26
Drive Cleat Connector.....	26
Hanger Strap Connector.....	27
Angle Connector.....	27
Hemmed Angle Connector.....	27
Hemmed Channel Connector.....	27
Lined Duct.....	28
Lined Duct L-Section - 5FT.....	28
45° Duct Elbow.....	29
45° Duct Angle - Style A.....	29
45° Duct Angle - Style B.....	29
90° Duct Elbow.....	30
90° Duct Elbow - Style A.....	30
90° Wall Stack Elbow - Style A.....	30
90° Duct Elbow - Style B.....	30
Straight Duct Starter.....	31



Duct End Cap.....	32
Duct End Cap.....	32
S&D Duct End Cap.....	33
Duct Reducer Increaser.....	34
Off-Set Duct Starter.....	35
Transition.....	36
Transition.....	36
Transition w/2" Rise.....	36
Pipe Takeoffs.....	37
Top Takeoff.....	37
Gasketed Straight Takeoff w/Damper.....	37
Gasketed Straight Takeoff w/o Damper.....	37
Top Takeoff - Slide Lock.....	38
WA Collar w/Crimp.....	38
WA Collar - Long.....	38
Stub WA Collar w/o Crimp.....	39
WA collar w/Damper.....	39
Twist-In Takeoffs.....	40
Twist-In Takeoff.....	40
Twist-In Takeoff w/Damper.....	40
Twist-In Takeoff w/Damper & Scoop.....	40
Ductboard Twist-In Takeoff.....	40
Ductboard Twist-In Takeoff w/Damper.....	40
Ductboard Tab-Lock Collar.....	41
Conical Twist-In Takeoff.....	41
Conical Twist-In Takeoff w/Damper.....	41
H/E Takeoff w/Damper.....	41
H/E Takeoff w/o Damper.....	41
Gasketed H/E Takeoff w/o Damper.....	42
H/E Takeoff w/Damper & Stand Off.....	42
Gasketed H/E Takeoff w/Damper.....	42
Gasketed H/E Takeoff w/Damper & Stand Off.....	42
Gasketed Conical Takeoff w/o Damper.....	42
Gasketed Conical Takeoff w/Damper.....	42



Manufacturer and Wholesaler of Sheet Metal, HVAC and Specialty Products

With Convenient Locations in Wichita, Omaha, Denver, Kansas City, Lincoln, and Des Moines



Conical Twist-In w/Damper & Stand Off.....	43
Return Air Components.....	44
Return Air Drop Kit.....	44
Return Air Drop w/1" Filter Kit.....	44
Return Air Frame.....	44
Return Air Boot.....	44
Return Air Angle.....	44
Filter Racks.....	45
Filter Rack.....	45
Filter Rack for 1" or 5" Air Bear Filter.....	45
Support Base w/Filter Rack.....	45
Plenums.....	46
Plenum - Tall.....	46
Plenum - Raw Both Ends.....	46
Wall Stack.....	47
Wall Stack - L-Section - 2FT.....	47
Wall Stack - L-Section - 8FT.....	47
Wall Stack End Caps.....	48
Wall Stack End Cap.....	48
Wall Stack Head.....	48
Wall Stack S&D End Cap.....	48
Ductboard.....	49
Ductboard Soundboot.....	49
Flex Connector.....	50
Straight Duct Starter Flex Connector.....	50
Flex Connector Raw Ends - Knotched.....	50
Supply Plates.....	51
Dryer Vent.....	52
Dryer Vent w/Flap.....	52
Dryer Vent w/Screen.....	52
Roof Dryer Vent w/Flap.....	52

Manufacturer and Wholesaler of Sheet Metal, HVAC and Specialty Products



With Convenient Locations in Wichita, Omaha, Denver, Kansas City, Lincoln, and Des Moines



Dryer Vent w/Flap less Extension.....	52
Dryer Box.....	52
Roof Flashing.....	53
Universal Common Roof Flashing.....	53
Flat Common Roof Flashing.....	53
Caps.....	54
Pitch Top Cap w/Screen.....	54
Rain Cap w/Screen.....	54
Spiral Pipe.....	55
Galvanized Spiral Pipe - 26GA.....	55
Galvanized Spiral Pipe - 24GA.....	55
Galvanized Spiral Pipe - 22GA.....	56
Galvanized Spiral Pipe - 20GA.....	56
Galvanized Spiral Pipe - 18GA.....	56
PVC Spiral Pipe - 26GA.....	57
PVC Spiral Pipe - 24GA.....	57
Paintlock Spiral Pipe - 24GA.....	57
Paintlock Spiral Pipe - 22GA.....	57
Spiral Coupling.....	58
Galvanized Spiral Coupling.....	58
Oval Pipe.....	59



Manufacturer and Wholesaler of Sheet Metal, HVAC and Specialty Products

With Convenient Locations in Wichita, Omaha, Denver, Kansas City, Lincoln, and Des Moines



Galvanized Flat Sheet

Gauge	Size	Part #	Qty Per Carton
20GA	48"x96"	G204896	104EA
20GA	48"x120"	G2048120	83EA
20GA	60"x120"	G2060120	66EA
22GA	36"x96"	G223696	166EA
22GA	48"x96"	G224896	125EA
22GA	48"x120"	G2248120	100EA
22GA	60"x120"	G2260120	80EA
24GA	36"x96"	G243696	208EA
24GA	36"x120"	G2436120	166EA
24GA	48"x96"	G244896	156EA
24GA	48"x120"	G2448120	125EA
24GA	60"x120"	G2460120	100EA
26GA	24"x96"	G262496	EA
26GA	30"x96"	G263096	EA
26GA	36"x96"	G263696	262EA
26GA	36"x120"	G2636120	210EA
26GA	48"x96"	G264896	197EA
26GA	48"x120"	G2648120	157EA
26GA	60"x120"	G2660120	126EA
28GA	16"x36"	G281636	EA
28GA	16"x96"	G281696	702EA
28GA	22"x96"	G282296	EA
28GA	24"x96"	G282496	468EA
28GA	26"x96"	G282696	EA
28GA	28"x96"	G282896	374EA
28GA	30"x96"	G283096	372EA
28GA	32"x48"	G283248	702EA
28GA	32"x96"	G283296	374EA
28GA	36"x96"	G283696	311EA
28GA	36"x120"	G2836120	249EA
28GA	48"x96"	G284896	234EA

Manufacturer and Wholesaler of Sheet Metal, HVAC and Specialty Products

With Convenient Locations in Wichita, Omaha, Denver, Kansas City, Lincoln, and Des Moines



G90 Galvanized Flat Sheet

Gauge	Size	Part #	Qty Per Carton
16GA	48"x96"	G164896G90	64EA
16GA	48"x120"	G1648120G90	52EA
16GA	60"x120"	G1660120G90	41EA
18GA	48"x96"	G184896G90	79EA
18GA	48"x120"	G1848120G90	64EA
18GA	60"x120"	G1860120G90	51EA
20GA	48"x96"	G204896G90	104EA
20GA	48"x120"	G2048120G90	83EA
20GA	60"x120"	G2060120G90	66EA
22GA	48"x96"	G224896G90	125EA
22GA	48"x120"	G2248120G90	100EA
22GA	60"x120"	G2260120G90	80EA
24GA	48"x96"	G244896G90	156EA
24GA	48"x120"	G2448120G90	125EA
24GA	60"x120"	G2460120G90	100EA
26GA	48"x96"	G264896G90	197EA
26GA	48"x120"	G2648120G90	157EA
26GA	60"x120"	G2660120G90	126EA

Manufacturer and Wholesaler of Sheet Metal, HVAC and Specialty Products

With Convenient Locations in Wichita, Omaha, Denver, Kansas City, Lincoln, and Des Moines



Paintlock Flat Sheet

Gauge	Size	Part #	Qty Per Carton
24GA	48"x120"	P2448120	EA
22GA	60"x120"	P2260120	EA
22GA	48"x120"	P2248120	EA

Aluminum Flat Sheet

Gauge	Size	Part #	Qty Per Carton
.032"	48"x120"	A03248120	EA
.025"	48"x120"	A02548120	EA
.040"	48"x120"	A04048120	EA

Stainless Flat Sheet

Gauge	Size	Part #	Qty Per Carton
24GA	48"x120"	2S2448120	EA
26GA	48"x120"	2S2648120	EA

Cold Rolled Flat Sheet

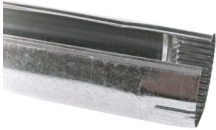
Gauge	Size	Part #	Qty Per Carton
16GA	48"x120"	CR1648120	EA

Manufacturer and Wholesaler of Sheet Metal, HVAC and Specialty Products

With Convenient Locations in Wichita, Omaha, Denver, Kansas City, Lincoln, and Des Moines



Snaplock Pipe - 10FT



Gauge	Size	Part #	Qty Per Bundle
30GA	3"	3X10P30	5
30GA	4"	4X10P30	5
30GA	5"	5X10P30	5
30GA	6"	6X10P30	5
30GA	7"	7X10P30	5

Buttonlock Pipe - 10FT



Gauge	Size	Part #	Qty Per Bundle
30GA	8"	B8X10P30	5
30GA	9"	B9X10P30	5
30GA	10"	B10X10P30	5
28GA	3"	B3X10P28	5
28GA	4"	B4X10P28	5
28GA	5"	B5X10P28	5
28GA	6"	B6X10P28	5
28GA	7"	B7X10P28	5
28GA	8"	B8X10P28	5

Manufacturer and Wholesaler of Sheet Metal, HVAC and Specialty Products

With Convenient Locations in Wichita, Omaha, Denver, Kansas City, Lincoln, and Des Moines



Snaplock Pipe - 5FT



Gauge	Size	Part #	Qty Per Bundle
30GA	3"	3X5P30	10
30GA	4"	4X5P30	10
30GA	5"	5X5P30	10
30GA	6"	6X5P30	10
30GA	7"	7X5P30	10
30GA	8"	8X5P30	10
30GA	9"	9X5P30	10
30GA	10"	10X5P30	10
30GA	12"	12X5P30	10
28GA	3"	3X5P28	10
28GA	4"	4X5P28	10
28GA	6"	6X5P28	10
26GA	3"	3X5P26	10
26GA	4"	4X5P26	10
26GA	5"	5X5P26	10
26GA	6"	6X5P26	10
26GA	7"	7X5P26	10
26GA	8"	8X5P26	10
26GA	9"	9X5P26	10
26GA	10"	10X5P26	10
26GA	12"	12X5P26	10
26GA	14"	14X5P26	10
26GA	16"	16X5P26	10
26GA	18"	18X5P26	10
26GA	20"	20X5P26	10
24GA	6"	6X5P24	10
24GA	8"	8X5P24	10
24GA	10"	10X5P24	10
24GA	12"	12X5P24	10
24GA	14"	14X5P24	10
24GA	16"	16X5P24	10
24GA	18"	18X5P24	10
24GA	20"	20X5P24	10

Manufacturer and Wholesaler of Sheet Metal, HVAC and Specialty Products

With Convenient Locations in Wichita, Omaha, Denver, Kansas City, Lincoln, and Des Moines



Buttonlock Pipe - 5FT



Gauge	Size	Part #	Qty Per Bundle
28GA	3"	B3X5P28	10
28GA	4"	B4X5P28	10
28GA	5"	B5X5P28	10
28GA	6"	B6X5P28	10
28GA	7"	B7X5P28	10
28GA	8"	B8X5P28	10
28GA	9"	B9X5P28	10
28GA	10"	B10X5P28	10
28GA	12"	B12X5P28	10
26GA	3"	B3X5P26	10
26GA	4"	B4X5P26	10
26GA	5"	B5X5P26	10
26GA	6"	B6X5P26	10
26GA	7"	B7X5P26	10
26GA	8"	B8X5P26	10
26GA	9"	B9X5P26	10
26GA	10"	B10X5P26	10
26GA	12"	B12X5P26	10

Manufacturer and Wholesaler of Sheet Metal, HVAC and Specialty Products

With Convenient Locations in Wichita, Omaha, Denver, Kansas City, Lincoln, and Des Moines



Snaplock Pipe - 2FT



Gauge	Size	Part #	Qty Per Bundle
30GA	3"	3X2P30	10
30GA	4"	4X2P30	10
30GA	5"	5X2P30	10
30GA	6"	6X2P30	10
30GA	7"	7X2P30	10
30GA	8"	8X2P30	10
30GA	10"	10X2P30	10
30GA	12"	12X2P30	10
28GA	3"	3X2P28	10
28GA	4"	4X2P28	10
28GA	6"	6X2P28	10
28GA	7"	7X2P28	10
26GA	3"	3X2P26	10
26GA	4"	4X2P26	10
26GA	5"	5X2P26	10
26GA	6"	6X2P26	10
26GA	7"	7X2P26	10
26GA	8"	8X2P26	10
26GA	9"	9X2P26	10
26GA	10"	10X2P26	10
26GA	12"	12X2P26	10
26GA	14"	14X2P26	10
26GA	16"	16X2P26	10
26GA	18"	18X2P26	10
24GA	4"	4X2P24	10
24GA	5"	5X2P24	10
24GA	6"	6X2P24	10
24GA	7"	7X2P24	10
24GA	8"	8X2P24	10
24GA	9"	9X2P24	10

Manufacturer and Wholesaler of Sheet Metal, HVAC and Specialty Products

With Convenient Locations in Wichita, Omaha, Denver, Kansas City, Lincoln, and Des Moines



Adjustable Elbow



Gauge	Size	Part #	Qty Per Bundle
24GA	4"	4E24	12EA
24GA	5"	5E24	12EA
24GA	6"	6E24	12EA
24GA	7"	7E24	12EA
24GA	8"	8E24	12EA
24GA	9"	9E24	12EA
24GA	10"	10E24	8EA
24GA	12"	12E24	8EA
24GA	14"	14E24	2EA
24GA	16"	16E24	2EA
24GA	18"	18E24	2EA
24GA	20"	20E24	2EA
26GA	3"	3E26	12EA
26GA	4"	4E26	12EA
26GA	5"	5E26	12EA
26GA	6"	6E26	12EA
26GA	7"	7E26	12EA
26GA	8"	8E26	12EA
26GA	9"	9E26	8EA
26GA	10"	10E26	8EA
26GA	12"	12E26	4EA
26GA	14"	14E26	4EA
26GA	16"	16E26	2EA
26GA	18"	18E26	2EA
26GA	20"	20E26	2EA
28GA	3"	3E28	12EA
28GA	4"	4E28	12EA
28GA	5"	5E28	12EA
28GA	6"	6E28	12EA
28GA	7"	7E28	12EA
28GA	8"	8E28	12EA
28GA	9"	9E28	8EA
28GA	10"	10E28	8EA
28GA	12"	12E28	4EA
28GA	14"	14E28	4EA
30GA	3"	3E30	12EA
30GA	4"	4E30	12EA
30GA	5"	5E30	12EA
30GA	6"	6E30	12EA
30GA	7"	7E30	12EA
30GA	8"	8E30	12EA

Manufacturer and Wholesaler of Sheet Metal, HVAC and Specialty Products

With Convenient Locations in Wichita, Omaha, Denver, Kansas City, Lincoln, and Des Moines



Manual Volume Damper



Gauge	Size	Part #	Qty Per Carton
	4"	4MVD	60EA
	5"	5MVD	60EA
	6"	6MVD	40EA
	7"	7MVD	32EA
	8"	8MVD	24EA
	10"	10MVD	16EA

Round Damper Blade w/Quadrant



Gauge	Size	Part #	Qty Per Carton
	4"	4DBQ	50EA
	5"	5DBQ	50EA
	6"	6DBQ	100EA
	7"	7DBQ	100EA
	8"	8DBQ	100EA
	10"	10DBQ	50EA
	12"	12DBQ	50EA
	14"	14DBQ	50EA
	16"	16DBQ	20EA

Round Damper Blade w/Quadrant - 2 Sides



Gauge	Size	Part #	Qty Per Carton
	6"	6DBQDE	200EA

Round Dampened Pipe Sleeve



Gauge	Size	Part #	Qty Per Carton
	4"	4DPS	24EA
	6"	6DPS	24EA

Manufacturer and Wholesaler of Sheet Metal, HVAC and Specialty Products

With Convenient Locations in Wichita, Omaha, Denver, Kansas City, Lincoln, and Des Moines



Vent Connector



Gauge	Size	Part #	Qty Per Carton
	4"x3"x3"	433VC	50EA
	4"x4"x3"	443VC	40EA
	4"x4"x4"	444VC	32EA
	5"x4"x3"	543VC	30EA
	5"x4"x4"	544VC	30EA
	6"x4"x3"	643VC	30EA
	6"x4"x4"	644VC	25EA
	6"x5"x4"	654VC	18EA
	6"x6"x4"	664VC	15EA
	7"x6"x4"	764VC	20EA

Manufacturer and Wholesaler of Sheet Metal, HVAC and Specialty Products

With Convenient Locations in Wichita, Omaha, Denver, Kansas City, Lincoln, and Des Moines



Angle Boot



Gauge	Size	Part #	Qty Per Carton
30GA	2-1/4"x10"/4"	2104AB	18EA
30GA	2-1/4"x10"/5"	2105AB	18EA
30GA	2-1/4"x10"/6"	2106AB	18EA
30GA	2-1/4"x12"/5"	2125AB	12EA
30GA	2-1/4"x12"/6"	2126AB	12EA
30GA	2-1/4"x14"/6"	2146AB	12EA
30GA	4"x10"/4"	4104AB	18EA
30GA	4"x10"/5"	4105AB	18EA
30GA	4"x10"/6"	4106AB	18EA
30GA	4"x10"/7"	4107AB	18EA
30GA	4"x10"/8"	4108AB	18EA
30GA	4"x12"/6"	4126AB	12EA
30GA	4"x12"/7"	4127AB	12EA
30GA	4"x12"/8"	4128AB	12EA
30GA	4"x14"/6"	4146AB	12EA
30GA	4"x14"/7"	4147AB	12EA
30GA	4"x14"/8"	4148AB	12EA
30GA	4"x8"/4"	484AB	24EA
30GA	4"x8"/6"	486AB	18EA
30GA	6"x10"/5"	6105AB	18EA
30GA	6"x10"/6"	6106AB	18EA
30GA	6"x10"/7"	6107AB	18EA
30GA	6"x10"/8"	6108AB	12EA
30GA	6"x12"/6"	6126AB	12EA
30GA	6"x12"/7"	6127AB	12EA
30GA	6"x12"/8"	6128AB	10EA
30GA	6"x14"/8"	6148AB	10EA
30GA	6"x8"/6"	686AB	18EA
30GA	8"x12"/8"	8128AB	10EA

Manufacturer and Wholesaler of Sheet Metal, HVAC and Specialty Products

With Convenient Locations in Wichita, Omaha, Denver, Kansas City, Lincoln, and Des Moines



Straight Boot



Gauge	Size	Part #	Qty Per Carton
30GA	2-1/4"x10"/4"	2104SB	18EA
30GA	2-1/4"x10"/5"	2105SB	18EA
30GA	2-1/4"x10"/6"	2106SB	18EA
30GA	2-1/4"x12"/5"	2125SB	12EA
30GA	2-1/4"x12"/6"	2126SB	12EA
30GA	2-1/4"x12"/7"	2127SB	12EA
30GA	2-1/4"x14"/6"	2146SB	12EA
30GA	4"x10"/4"	4104SB	18EA
30GA	4"x10"/5"	4105SB	18EA
30GA	4"x10"/6"	4106SB	18EA
30GA	4"x10"/7"	4107SB	18EA
30GA	4"x10"/8"	4108SB	18EA
30GA	4"x12"/6"	4126SB	12EA
30GA	4"x12"/7"	4127SB	12EA
30GA	4"x12"/8"	4128SB	12EA
30GA	4"x14"/6"	4146SB	12EA
30GA	4"x14"/7"	4147SB	12EA
30GA	4"x14"/8"	4148SB	12EA
30GA	4"x8"/4"	484SB	24EA
30GA	4"x8"/5"	485SB	18EA
30GA	4"x8"/6"	486SB	18EA
30GA	6"x10"/5"	6105SB	18EA
30GA	6"x10"/6"	6106SB	18EA
30GA	6"x10"/7"	6107SB	18EA
30GA	6"x10"/8"	6108SB	18EA
30GA	6"x12"/6"	6126SB	12EA
30GA	6"x12"/7"	6127SB	12EA
30GA	6"x12"/8"	6128SB	12EA
30GA	6"x14"/6"	6146SB	24EA
30GA	6"x14"/7"	6147SB	12EA
30GA	6"x14"/8"	6148SB	12EA
30GA	6"x8"/6"	686SB	18EA
30GA	8"x12"/8"	8128SB	12EA
30GA	8"x14"/8"	8148SB	12EA

Manufacturer and Wholesaler of Sheet Metal, HVAC and Specialty Products

With Convenient Locations in Wichita, Omaha, Denver, Kansas City, Lincoln, and Des Moines



End Boot



Gauge	Size	Part #	Qty Per Carton
	2-1/4"x10"/4"	2104BB	18EA
	2-1/4"x10"/5"	2105BB	18EA
	2-1/4"x10"/6"	2106BB	18EA
	2-1/4"x12"/5"	2125BB	12EA
	2-1/4"x12"/6"	2126BB	12EA
	2-1/4"x12"/6"	2126BBL (Left)	18EA
	2-1/4"x12"/6"	2126BBR (Right)	18EA
	4"x10"/4"	4104BB	18EA
	4"x10"/5"	4105BB	18EA
	4"x10"/6"	4106BB	18EA
	4"x10"/6"	4106BBL (Left)	18EA
	4"x10"/6"	4106BBR (Right)	18EA
	4"x10"/7"	4107BB	18EA
	4"x10"/8"	4108BB	12EA
	4"x12"/6"	4126BB	12EA
	4"x12"/7"	4127BB	12EA
	4"x12"/8"	4128BB	12EA
	4"x14"/8"	4148BB	8EA
	6"x10"/6"	6106BB	12EA
	6"x12"/7"	6127BB	12EA
	6"x12"/8"	6128BB	12EA
	6"x14"/8"	6148BB	8EA

Manufacturer and Wholesaler of Sheet Metal, HVAC and Specialty Products

With Convenient Locations in Wichita, Omaha, Denver, Kansas City, Lincoln, and Des Moines



Stack Boot



Angle



Straight



End

Gauge	Size	Part #	Qty Per Carton
Angle	3-1/4"x8"/6"	386WSAB	12EA
Angle	3-1/4"x10"/5"	3105WSAB	12EA
Angle	3-1/4"x10"/6"	3106WSAB	12EA
Angle	3-1/4"x10"/7"	3107WSAB	12EA
Angle	3-1/4"x12"/6"	3126WSAB	12EA
Angle	3-1/4"x12"/7"	3127WSAB	8EA
Angle	3-1/4"x12"/8"	3128WSAB	8EA
Angle	3-1/4"x14"/8"	3148WSAB	8EA
Straight	3-1/4"x10"/6"	3106WSSB	12EA
Straight	3-1/4"x10"/7"	3107WSSB	16EA
Straight	3"x10"-8"	3108WSSB	8EA
Straight	3-1/4"x12"/6"	3126WSSB	8EA
Straight	3-1/4"x12"/7"	3127WSSB	8EA
Straight	3-1/4"x12"/8"	3128WSSB	12EA
End	3-1/4"x10"/6"	3106WSBB	12EA
End	3-1/4"x14"/8"	3148WSBB	8EA

Plated Angle Ceiling Boot



Gauge	Size	Part #	Qty Per Carton
	6"x6" SQ TO 5" RND	45A65	8EA
	6"x6" SQ TO 6" RND	45A66	8EA
	8"x8" SQ TO 6" RND	45A86	10EA
	8"x8" SQ TO 7" RND	45A87	8EA
	10"x10" SQ TO 8" RND	45A108	6EA
	12"x12" SQ TO 10" RND	45A1210	4EA

Plated Straight Ceiling Boot



Gauge	Size	Part #	Qty Per Carton
	6"x6" SQ TO 5" RND	54S65	14EA
	6"x6" SQ TO 6" RND	54S66	14EA
	8"x8" SQ TO 6" RND	54S86	14EA
	8"x8" SQ TO 7" RND	54S87	14EA
	10"x10" SQ TO 7" RND	54S107	7EA
	10"x10" SQ TO 8" RND	54S108	9EA
	12"x12" SQ TO 8" RND	54S128	7EA
	12"x12" SQ TO 10" RND	54S1210	6EA
	14"x14" SQ TO 10" RND	54S1410	
	14"x14" SQ TO 12" RND	54S1412	

Manufacturer and Wholesaler of Sheet Metal, HVAC and Specialty Products

With Convenient Locations in Wichita, Omaha, Denver, Kansas City, Lincoln, and Des Moines



Pipe Cap



Gauge	Size	Part #	Qty Per Carton
	3"	3PC	50EA
	4"	4PC	50EA
	5"	5PC	50EA
	6"	6PC	100EA
	6" w/Crimp	6PCC	100EA
	7"	7PC	30EA
	8"	8PC	50EA
	8" w/Crimp	8PCC	50EA
	9"	9PC	30EA
	10"	10PC	35EA
	12"	12PC	25EA
	14"	14PC	25EA
	16"	16PC	18EA
	18"	18PC	14EA
	20"	20PC	10EA

Manufacturer and Wholesaler of Sheet Metal, HVAC and Specialty Products

With Convenient Locations in Wichita, Omaha, Denver, Kansas City, Lincoln, and Des Moines



Plug Reducer



Gauge	Size	Part #	Qty Per Carton
	4"-3"	43PR	100EA
	5"-4"	54PR	50EA
	6"-4"	64PR	50EA
	6"-5"	65PR	50EA
	7"-6"	76PR	50EA
	8"-6"	86PR	20EA
	10"-8"	108PR	20EA
	12"-8"	128PR	20EA
	12"-9"	129PR	20EA
	12"-10"	1210PR	20EA

Manufacturer and Wholesaler of Sheet Metal, HVAC and Specialty Products

With Convenient Locations in Wichita, Omaha, Denver, Kansas City, Lincoln, and Des Moines



Tapered Reducer



Gauge	Size	Part #	Qty Per Carton
	4"-3"	43TR	100EA
	5"-3"	53TR	50EA
	5"-4"	54TR	50EA
	6"-3"	63TR	50EA
	6"-4"	64TR	50EA
	6"-5"	65TR	50EA
	7"-4"	74TR	50EA
	7"-5"	75TR	50EA
	7"-6"	76TR	50EA
	8"-4"	84TR	50EA
	8"-5"	85TR	50EA
	8"-6"	86TR	50EA
	8"-7"	87TR	30EA
	9"-7"	97TR	30EA
	9"-8"	98TR	28EA
	10"-6"	106TR	28EA
	10"-7"	107TR	28EA
	10"-8"	108TR	28EA
	10"-9"	109TR	28EA
	12"-6"	126TR	EA
	12"-8"	128TR	EA
	12"-9"	129TR	EA
	12"-10"	1210TR	EA
	14"-8"	148TR	EA
	14"-10"	1410TR	EA
	14"-12"	1412TR	EA
	16"-10"	1610TR	EA
	16"-12"	1612TR	EA
	16"-14"	1614TR	EA
	18"-14"	1814TR	EA
	18"-16"	1816TR	EA
	20"-16"	2016TR	EA

Manufacturer and Wholesaler of Sheet Metal, HVAC and Specialty Products

With Convenient Locations in Wichita, Omaha, Denver, Kansas City, Lincoln, and Des Moines



Branch Wye



Gauge	Size	Part #	Qty Per Carton
	6"x6"x6"	666WYE	EA
	7"x5"x5"	755WYE	EA
	8"x7"x6"	876WYE	EA
	8"x6"x6"	866WYE	EA
	8"x8"x6"	886WYE	EA
	8"x8"x8"	888WYE	EA
	9"x8"x5"	985WYE	EA
	9"x8"x6"	986WYE	EA
	9"x7"x7"	977WYE	EA
	10"x8"x8"	1088WYE	EA
	12"x10"x10"	121010WYE	EA

Tee Joint



Gauge	Size	Part #	Qty Per Carton
	4"	4TEE	EA
	5"	5TEE	EA
	6"	6TEE	EA
	7"	7TEE	EA
	8"	8TEE	EA
	10"	10TEE	EA
	12"	12TEE	EA
	14"	14TEE	EA
	16"	16TEE	EA
	18"	18TEE	EA

90° Saddle Tee



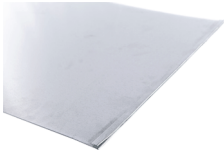
Gauge	Size	Part #	Qty Per Carton
	3"	390ST	50EA
	4"	490ST	30EA
	5"	590ST	25EA
	6"	690ST	25EA
	7"	790ST	25EA
	8"	890ST	25EA
	9"	990ST	16EA
	10"	1090ST	12EA
	12"	1290ST	10EA

Manufacturer and Wholesaler of Sheet Metal, HVAC and Specialty Products

With Convenient Locations in Wichita, Omaha, Denver, Kansas City, Lincoln, and Des Moines



Joist Panning



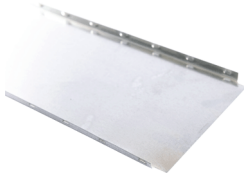
Gauge	Size	Part #	Qty Per Pallet
28GA	17"x41"	1741JP	300
28GA	20"x41"	2041JP	300
28GA	24"x41"	2441JP	300
28GA	33"x41"	3341JP	300

Manufacturer and Wholesaler of Sheet Metal, HVAC and Specialty Products

With Convenient Locations in Wichita, Omaha, Denver, Kansas City, Lincoln, and Des Moines



Duct Top/Bottom



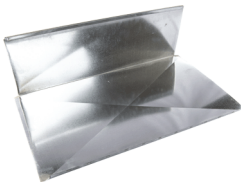
Gauge	Size	Part #	Qty Per Carton
28GA	12"x48"	12TOP	
28GA	14"x48"	14TOP	
26GA	16"x48"	16TOP	
26GA	18"x48"	18TOP	
26GA	20"x48"	20TOP	
26GA	22"x48"	22TOP	
26GA	24"x48"	24TOP	
26GA	26"x48"	26TOP	
26GA	30"x48"	30TOP	

Duct Side



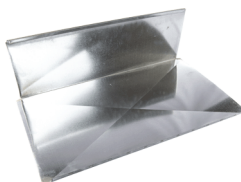
Gauge	Size	Part #	Qty Per Carton
28GA	8"x48"	8SIDE	
28GA	10"x48"	10SIDE	
28GA	12"x48"	12SIDE	
28GA	14"x48"	14SIDE	
26GA	16"x48"	16SIDE	
26GA	18"x48"	18SIDE	
26GA	20"x48"	20SIDE	

Duct L-Section - 2FT



Gauge	Size	Part #	Qty Per Carton
28GA	14"x8"	DLS1482	2FT
26GA	18"x8"	DLS1882	2FT
26GA	20"x8"	DLS2082	2FT
26GA	22"x8"	DLS2282	2FT

Duct L-Section - 3FT



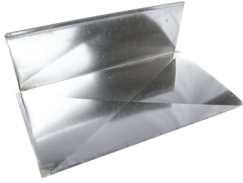
Gauge	Size	Part #	Qty Per Carton
26GA	25"x10"	DLS25103	3FT
26GA	26"x10"	DLS26103	3FT
26GA	26"x12"	DLS26123	3FT

Manufacturer and Wholesaler of Sheet Metal, HVAC and Specialty Products

With Convenient Locations in Wichita, Omaha, Denver, Kansas City, Lincoln, and Des Moines



Duct L-Section - 4FT



Gauge	Size	Part #	Qty Per Carton
28GA	10"x8"	DLS1084	4FT
28GA	12"x8"	DLS1284	4FT
28GA	14"x8"	DLS1484	4FT
28GA	14-1/2"x8"	DLS14584	4FT
28GA	12-1/2"x10"	DLS125104	4FT
28GA	14"x10"	DLS14104	4FT
28GA	14"x12"	DLS14124	4FT
28GA	14"x14"	DLS14144	4FT
26GA	16-1/2"x10"	DLS165104	4FT
26GA	18-1/2"x10"	DLS185104	4FT
26GA	20-1/2"x10"	DLS205104	4FT
26GA	26"x10"	DLS26104	4FT
26GA	26"x12"	DLS26124	4FT

Manufacturer and Wholesaler of Sheet Metal, HVAC and Specialty Products

With Convenient Locations in Wichita, Omaha, Denver, Kansas City, Lincoln, and Des Moines



Duct L-Section - 5FT



Gauge	Size	Part #	Qty Per Carton
28GA	8"x8"	DLS885	5FT
28GA	10"x8"	DLS1085	5FT
28GA	12"x8"	DLS1285	5FT
28GA	14"x8"	DLS1485	5FT
26GA	10"x8"	DLS1085G26	5FT
26GA	12"x8"	DLS1285G26	5FT
26GA	14"x8"	DLS1485G26	5FT
26GA	16"x8"	DLS1685	5FT
26GA	18"x8"	DLS1885	5FT
26GA	20"x8"	DLS2085	5FT
26GA	22"x8"	DLS2285	5FT
26GA	24"x8"	DLS2485	5FT
26GA	30"x8"	DLS3085	5FT
28GA	10"x10"	DLS10105	5FT
28GA	12"x10"	DLS12105	5FT
28GA	14"x10"	DLS14105	5FT
26GA	14"x10"	DLS14105G26	5FT
26GA	16"x10"	DLS16105	5FT
26GA	18"x10"	DLS18105	5FT
26GA	20"x10"	DLS20105	5FT
26GA	22"x10"	DLS22105	5FT
26GA	24"x10"	DLS24105	5FT
26GA	25"x10"	DLS25105	5FT
26GA	30"x10"	DLS30105	5FT
28GA	12"x12"	DLS12125	5FT
28GA	14"x12"	DLS14125	5FT
26GA	14"x12"	DLS14125G26	5FT
26GA	16"x12"	DLS16125	5FT
26GA	18"x12"	DLS18125	5FT
26GA	20"x12"	DLS20125	5FT
26GA	22"x12"	DLS22125	5FT
26GA	25"x12"	DLS25125G26	5FT
26GA	20"x14"	DLS20145	5FT
26GA	24"x14"	DLS24145	5FT

Manufacturer and Wholesaler of Sheet Metal, HVAC and Specialty Products

With Convenient Locations in Wichita, Omaha, Denver, Kansas City, Lincoln, and Des Moines



Raw Duct L-Section - 5FT

Gauge	Size	Part #	Qty Per Carton
28GA	10"x6"	RDLS1065	5FT
28GA	8"x8"	RDLS885	5FT
28GA	10"x8"	RDLS1085	5FT
28GA	12"x8"	RDLS1285	5FT
28GA	14"x8"	RDLS1485	5FT
26GA	16"x8"	RDLS1685	5FT
26GA	18"x8"	RDLS1885	5FT
26GA	20"x8"	RDLS2085	5FT
26GA	22"x8"	RDLS2285	5FT
26GA	24"x8"	RDLS2485	5FT
28GA	10"x10"	RDLS10105	5FT
28GA	12"x10"	RDLS12105	5FT
28GA	14"x10"	RDLS14105	5FT
26GA	16"x10"	RDLS16105	5FT
26GA	18"x10"	RDLS18105	5FT
26GA	20"x10"	RDLS20105	5FT
26GA	22"x10"	RDLS22105	5FT
26GA	24"x10"	RDLS24105	5FT
28GA	12"x12"	RDLS12125	5FT
28GA	14"x12"	RDLS14125	5FT
26GA	20"x12"	RDLS20125	5FT
26GA	24"x12"	RDLS24125	5FT
26GA	25"x12"	RDLS25125	5FT
26GA	16"x14"	RDLS16145	5FT
26GA	20"x14"	RDLS20145	5FT
26GA	17-1/2"x17-1/2"	RDLS1751755	5FT
26GA	19-1/2"x19-1/2"	RDLS1951955	5FT

Manufacturer and Wholesaler of Sheet Metal, HVAC and Specialty Products

With Convenient Locations in Wichita, Omaha, Denver, Kansas City, Lincoln, and Des Moines



Duct L-Section - 8FT



Gauge	Size	Part #	Qty Per Carton
28GA	8"x8"	DLS888	8FT
28GA	10"x8"	DLS1088	8FT
28GA	12"x8"	DLS1288	8FT
28GA	14-1/2"x8"	DLS14588	8FT
28GA	14"x8"	DLS1488	8FT
26GA	16"x8"	DLS1688	8FT
26GA	18"x8"	DLS1888	8FT
26GA	20"x8"	DLS2088	8FT
26GA	24"x8"	DLS2488	8FT
28GA	10"x10"	DLS10108	8FT
28GA	12"x10"	DLS12108	8FT
28GA	12-1/2"x10"	DLS125108	8FT
28GA	14"x10"	DLS14108	8FT
26GA	16"x10"	DLS16108	8FT
26GA	16-1/2"x10"	DLS165108	8FT
26GA	18"x10"	DLS18108	8FT
26GA	18-1/2"x10"	DLS185108	8FT
26GA	20"x10"	DLS20108	8FT
26GA	20-1/2"x10"	DLS205108	8FT
26GA	24"x10"	DLS24108	8FT
28GA	12"x12"	DLS12128	8FT
28GA	14-1/2"x12"	DLS145128	8FT
26GA	16-1/2"x12"	DLS165128	8FT

Manufacturer and Wholesaler of Sheet Metal, HVAC and Specialty Products

With Convenient Locations in Wichita, Omaha, Denver, Kansas City, Lincoln, and Des Moines



Raw Duct L-Section - 8FT

Gauge	Size	Part #	Qty Per Carton
26GA	16"x6"	RDLS1668	8FT
28GA	8"x8"	RDLS888	8FT
28GA	10"x8"	RDLS1088	8FT
28GA	12"x8"	RDLS1288	8FT
28GA	14"x8"	RDLS1488	8FT
26GA	16"x8"	RDLS1688	8FT
26GA	18"x8"	RDLS1888	8FT
26GA	20"x8"	RDLS2088	8FT
26GA	22"x8"	RDLS2288	8FT
26GA	24"x8"	RDLS2488	8FT
28GA	10"x10"	RDLS10108	8FT
28GA	12"x10"	RDLS12108	8FT
28GA	14"x10"	RDLS14108	8FT
26GA	16"x10"	RDLS16108	8FT
26GA	18"x10"	RDLS18108	8FT
26GA	20"x10"	RDLS20108	8FT
26GA	22"x10"	RDLS22108	8FT
26GA	24"x10"	RDLS24108	8FT
26GA	25"x10"	RDLS25108	8FT
24GA	25"x10"	RDLS25108	8FT
26GA	20"x12"	RDLS20128	8FT
26GA	22"x12"	RDLS22128	8FT
24GA	25"x12"	RDLS2512824	8FT
26GA	20"x14"	RDLS20148	8FT
24GA	25"x16"	RDLS25168	8FT

Manufacturer and Wholesaler of Sheet Metal, HVAC and Specialty Products

With Convenient Locations in Wichita, Omaha, Denver, Kansas City, Lincoln, and Des Moines



S-Lock Connector



Gauge	Size	Part #	Qty Per Carton
	8"	8SL	3,000EA
	10"	10SL	1,500EA
	12"	12SL	1,500EA
	14"	14SL	1,500EA
	16"	16SL	1,500EA
	18"	18SL	1,000EA
	20"	20SL	1,000EA
	22"	22SL	800EA
	24"	24SL	800EA
	25"	25SL	800EA
	26"	26SL	800EA
	28"	28SL	800EA
	30"	30SL	800EA
	60"	60SL	
28GA	96"	96SL	
	120"	120SL	
24GA	120"	120SL24	

Standing S-Lock Connector



Gauge	Size	Part #	Qty Per Carton
26GA	1/2"	1226SSL10	10FT
24GA	1"	124SSL10	10FT

Drive Cleat Connector



Gauge	Size	Part #	Qty Per Carton
	14"	14DV	3,000EA
	16"	16DV	1,500EA
	18"	18DV	1,000EA
	20"	20DV	800EA
	60"	60DV	EA
	96"	96DV	EA
	120"	120DV	EA
24GA	120"	120DV24	500EA

Manufacturer and Wholesaler of Sheet Metal, HVAC and Specialty Products

With Convenient Locations in Wichita, Omaha, Denver, Kansas City, Lincoln, and Des Moines



Hanger Strap Connector



Gauge	Size	Part #	Qty Per Carton
	1"x120"	1120HS	
26GA	1"x120"	1120HS26	
22GA	1"x120"	1120HS22	
20GA	1"x120"	1120HS20	
18GA	1"x120"	1120HS18	
	1-1/2"x120"	112120HS	

Angle Connector

Gauge	Size	Part #	Qty Per Carton
16GA	1-1/2"x1-1/2"	112112A16	10FT
18GA	1-1/2"x1-1/2"	112112ANGLE18GA	10FT
	2"x2"x120"	22ANGLE	10FT
	1/2"x2"	122ANGLE	10FT
	1/2"x2"	122ANGLE96	8FT

Hemmed Angle Connector

Gauge	Size	Part #	Qty Per Carton
	1/2"x2"x96"	122ANGLE96	
	1/2"x2"x120"	H122ANGLE10FT	

Hemmed Channel Connector

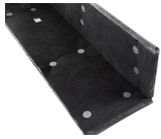
Gauge	Size	Part #	Qty Per Carton
	1/2"x2"x1/2"x120"	12212HCHNL	

Manufacturer and Wholesaler of Sheet Metal, HVAC and Specialty Products

With Convenient Locations in Wichita, Omaha, Denver, Kansas City, Lincoln, and Des Moines



Lined Duct L-Section - 5FT



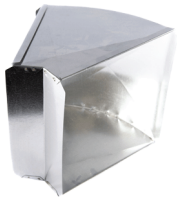
Gauge	Size	Part #	Qty Per Carton
	10"x8"	LDLS1085	5FT
	10"x10"	LDLS10105	5FT
	12"x10"	LDLS12105	5FT
	14"x8"	LDLS1485	5FT
	14"x10"	LDLS14105	5FT
	16"x10"	LDLS16105	5FT
	18"x10"	LDLS18105	5FT
	20"x10"	LDLS20105	5FT
	24"x10"	LDLS24105	5FT

Manufacturer and Wholesaler of Sheet Metal, HVAC and Specialty Products

With Convenient Locations in Wichita, Omaha, Denver, Kansas City, Lincoln, and Des Moines

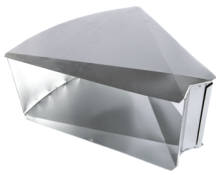


45° Duct Angle - Style A



Gauge	Size	Part #	Qty Per Carton
	8"x8"	88A45	
	12"x8"	128A45	
	12"x10"	1210A45	
	14"x8"	148A45	
	14"x10"	1410A45	
	14"x12"	1412A45	
	16"x8"	168A45	
	16"x10"	1610A45	
	18"x8"	188A45	
	20"x10"	2010A45	

45° Duct Angle - Style B



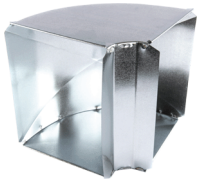
Gauge	Size	Part #	Qty Per Carton
	10"x8"	108B45	
	12"x8"	128B45	
	12"x10"	1210B45	
	14"x8"	148B45	
	14"x10"	1410B45	
	16"x8"	168B45	
	16"x10"	1610B45	
	18"x8"	188B45	
	20"x8"	208B45	
	20"x10"	2010B45	

Manufacturer and Wholesaler of Sheet Metal, HVAC and Specialty Products

With Convenient Locations in Wichita, Omaha, Denver, Kansas City, Lincoln, and Des Moines



90° Duct Elbow - Style A



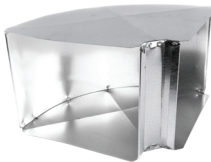
Gauge	Size	Part #	Qty Per Carton
	8"x8"	88A90	
	10"x8"	108A90	
	10"x10"	1010A90	
	12"x8"	128A90	
	12"x10"	1210A90	
	12"x12"	1212A90	
	14"x8"	148A90	
	14"x10"	1410A90	
	14"x12"	1412A90	
	16"x8"	168A90	
	16"x10"	1610A90	
	18"x8"	188A90	
	20"x8"	208A90	
	20"x10"	2010A90	
	24"x10"	2410A90	
	25"x12"	2512A90	

90° Wall Stack Elbow - Style A



Gauge	Size	Part #	Qty Per Carton
	2-1/4"x12"	212A90	50/BX/D
	3-1/4"x10"	310A90	

90° Duct Elbow - Style B



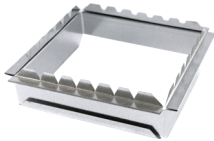
Gauge	Size	Part #	Qty Per Carton
	10"x8"	108B90	
	10"x10"	1010B90	
	12"x8"	128B90	
	12"x10"	1210B90	
	12"x12"	1212B90	
	14"x8"	148B90	
	14"x10"	1410B90	
	14"x12"	1412B90	
	16"x8"	168B90	
	16"x10"	1610B90	
	16"x12"	1612B90	
	18"x8"	188B90	
	18"x10"	1810B90	
	20"x8"	208B90	
	20"x10"	2010B90	

Manufacturer and Wholesaler of Sheet Metal, HVAC and Specialty Products

With Convenient Locations in Wichita, Omaha, Denver, Kansas City, Lincoln, and Des Moines



Straight Duct Starter



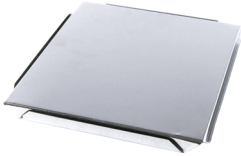
Gauge	Size	Part #	Qty Per Carton
	8"x8"	88SDS	30EA
	10"x8"	108SDS	52EA
	12"x8"	128SDS	38EA
	12"x10"	1210SDS	30EA
	14"x8"	148SDS	35EA
	14"x10"	1410SDS	28EA
	14"x12"	1412SDS	28EA
	16"x8"	168SDS	36EA
	16"x10"	1610SDS	28EA
	18"x8"	188SDS	36EA
	20"x10"	2010SDS	24EA
	24"x10"	2410SDS	24EA
	25"x10"	2510SDS	24EA
	25"x12"	2512SDS	20EA

Manufacturer and Wholesaler of Sheet Metal, HVAC and Specialty Products

With Convenient Locations in Wichita, Omaha, Denver, Kansas City, Lincoln, and Des Moines



Duct End Cap



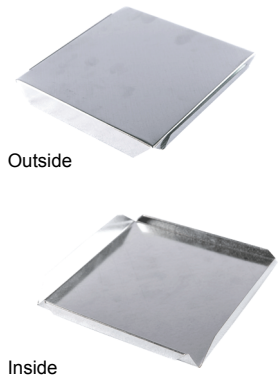
Gauge	Size	Part #	Qty Per Carton
	8"x8"	88EC	
	10"x8"	108EC	
	10"x10"	1010EC	
	12"x8"	128EC	
	12"x10"	1210EC	
	12"x12"	1212EC	
	14"x5"	145EC	
	14"x8"	148EC	
	14"x10"	1410EC	
	14"x12"	1412EC	
	14"x14"	1414EC	
	16"x8"	168EC	
	16"x10"	1610EC	
	16"x12"	1612EC	
	18"x8"	188EC	
	18"x10"	1810EC	
	20"x8"	208EC	
	20"x10"	2010EC	
	20"x12"	2012EC	
	20"x14"	2014EC	
	20"x16"	2016EC	
	20"x20"	2020EC	
	22"x10"	2210EC	
	24"x8"	248EC	
	24"x10"	2410EC	
	24"x12"	2412EC	
	25"x10"	2510EC	
	25"x12"	2512EC	
	26"x10"	2610EC	
	26"x12"	2612EC	

Manufacturer and Wholesaler of Sheet Metal, HVAC and Specialty Products

With Convenient Locations in Wichita, Omaha, Denver, Kansas City, Lincoln, and Des Moines



S&D Duct End Cap



Gauge	Size	Part #	Qty Per Carton
	8"x8"	88SDEC	
	10"x8"	108SDEC	
	10"x10"	1010SDEC	
	12"x8"	128SDEC	
	12"x10"	1210SDEC	
	14"x8"	148SDEC	
	14"x10"	1410SDEC	
	14"x12"	1412SDEC	
	16"x8"	168SDEC	
	16"x10"	1610SDEC	
	16"x12"	1612SDEC	
	18"x8"	188SDEC	
	18"x10"	1810SDEC	
	20"x8"	208SDEC	
	20"x10"	2010SDEC	
	24"x8"	248SDEC	
	24"x10"	2410SDEC	
	24"x12"	2412SDEC	

Manufacturer and Wholesaler of Sheet Metal, HVAC and Specialty Products

With Convenient Locations in Wichita, Omaha, Denver, Kansas City, Lincoln, and Des Moines



Duct Reducer/Increaser



Gauge	Size	Part #	Qty Per Carton
	2"x8"	28DR	50EA
	2"x10"	210DR	50EA
	4"x8"	48DR	50EA
	4"x10"	410DR	50EA

Manufacturer and Wholesaler of Sheet Metal, HVAC and Specialty Products

With Convenient Locations in Wichita, Omaha, Denver, Kansas City, Lincoln, and Des Moines



Off-Set Duct Starter



Gauge	Size	Part #	Qty Per Carton
	8"x8"	88ODS	
	10"x8"	108ODS	
	12"x8"	128ODS	
	14"x8"	148ODS	
	16"x8"	168ODS	

Manufacturer and Wholesaler of Sheet Metal, HVAC and Specialty Products

With Convenient Locations in Wichita, Omaha, Denver, Kansas City, Lincoln, and Des Moines



Transition



Gauge	Size	Part #	Qty Per Carton
	12"x8"/10"x8"	128/108T	
	14"x8"/10"x8"	148/108T	
	14"x8"/12"x8"	148/128T	
	16"x8"/12"x8"	168/128T	
	16"x8"/14"x8"	168/148T	
	18"x8"/14"x8"	188/148T	
	20"x8"/14"x8"	208/148T	
	20"x8"/16"x8"	208/168T	
	20"x10"/14"x10"	2010/1410T	
	20"x10"/16"x10"	2010/1610T	

Transition w/2" Rise



Gauge	Size	Part #	Qty Per Carton
	16"x8"/13"x10"	47C168/1310T2R	
	18"x8"/15"x10"	47C188/1510T2R	
	20"x8"/18"x10"	47C208/1810T2R	



Top Takeoff



Gauge	Size	Part #	Qty Per Carton
	4"	4TTO	40EA
	5"	5TTO	20EA
	6"	6TTO	20EA
	7"	7TTO	20EA
	8"	8TTO	16EA
	10"	10TTO	6EA
	4" w/4"x5" Opening	4TOH	50EA
	5" w/6"x6" Opening	5TOH	25EA
	6" w/7"x7" Opening	6TOH	20EA
	7" w/8"x7" Opening	7TOH	18EA

Gasketed Straight Takeoff w/Damper



Gauge	Size	Part #	Qty Per Carton
	4"	G4TOD	18EA
	5"	G5TOD	18EA
	6"	G6TOD	18EA
	8"	G8TOD	12EA
	10"	G10TOD	6EA
	12"	G12TOD	8EA
	14"	G14TOD	
	16"	G16TOD	
	18"	G18TOD	

Gasketed Straight Takeoff w/o Damper



Gauge	Size	Part #	Qty Per Carton
	4"	G4TO	18EA
	5"	G5TO	18EA
	6"	G6TO	18EA
	7"	G7TO	12EA
	8"	G8TO	12EA
	9"	G9TO	12EA
	10"	G10TO	12EA
	12"	G12TO	10EA
	14"	G14TO	6EA
	16"	G16TO	6EA
	18"	G18TO	6EA

Manufacturer and Wholesaler of Sheet Metal, HVAC and Specialty Products

With Convenient Locations in Wichita, Omaha, Denver, Kansas City, Lincoln, and Des Moines



Top Takeoff - Slide Lock



Gauge	Size	Part #	Qty Per Carton
	5"	5TTOSL	20EA
	6"	6TTOSL	24EA
	7"	7TTOSL	18EA
	8"	8TTOSL	12EA

WA Collar w/Crimp



Gauge	Size	Part #	Qty Per Carton
	3"	3WAC	100EA
	4"	4WAC	100EA
	5"	5WAC	100EA
	6"	6WAC	100EA
	7"	7WAC	60EA
	8"	8WAC	60EA
	9"	9WAC	40EA
	10"	10WAC	40EA
	12"	12WAC	40EA
	14"	14WAC	40EA
	16"	16WAC	20EA
	18"	18WAC	20EA
	20"	20WAC	20EA

WA Collar - Long



Gauge	Size	Part #	Qty Per Carton
	4"	4WACL	40EA
	5"	5WACL	60EA
	6"	6WACL	60EA
	7"	7WACL	30EA
	8"	8WACL	30EA
	9"	9WACL	30EA
	10"	10WACL	30EA
	12"	12WACL	16EA
	14"	14WACL	16EA
	16"	16WACL	10EA
	18"	18WACL	10EA
	20"	20WACL	10EA

Manufacturer and Wholesaler of Sheet Metal, HVAC and Specialty Products

With Convenient Locations in Wichita, Omaha, Denver, Kansas City, Lincoln, and Des Moines



Stub WA Collar w/o Crimp



Gauge	Size	Part #	Qty Per Carton
	4"	4WACS	100EA
	5"	5WACS	100EA
	6"	6WACS	100EA
	7"	7WACS	60EA
	8"	8WACS	60EA
	10"	10WACS	40EA
	12"	12WACS	40EA
	14"	14WACS	40EA

WA Collar w/Damper



Gauge	Size	Part #	Qty Per Carton
	4"	4WACD	30EA
	5"	5WACD	24EA
	6"	6WACD	24EA
	7"	7WACD	24EA
	8"	8WACD	24EA
	10"	10WACD	16EA
	12"	12WACD	10EA
	14"	14WACD	
	16"	16WACD	

Manufacturer and Wholesaler of Sheet Metal, HVAC and Specialty Products

With Convenient Locations in Wichita, Omaha, Denver, Kansas City, Lincoln, and Des Moines



Twist-In Takeoff



Gauge	Size	Part #	Qty Per Carton
	4"	4TW	18EA
	6"	6TW	24EA
	7"	7TW	12EA
	8"	8TW	12EA
	10"	10TW	12EA
	12"	12TW	10EA
	14"	14TW	8EA

Twist-In Takeoff w/Damper



Gauge	Size	Part #	Qty Per Carton
	4"	4TWD	18EA
	6"	6TWD	18EA
	7"	7TWD	12EA
	8"	8TWD	18EA
	10"	10TWD	16EA
	12"	12TWD	10EA
	14"	14TWD	

Twist-In Takeoff w/Damper & Scoop



Gauge	Size	Part #	Qty Per Carton
	5"	5TWDS	18EA
	6"	6TWDS	18EA
	8"	8TWDS	18EA
	10"	10TWDS	16EA

Ductboard Twist-In Takeoff



Gauge	Size	Part #	Qty Per Carton
	6"	6DTW	18EA
	8"	8DTW	18EA

Ductboard Twist-In Takeoff w/Damper



Gauge	Size	Part #	Qty Per Carton
	6"	6DTWD	18EA
	8"	8DTWD	12EA

Manufacturer and Wholesaler of Sheet Metal, HVAC and Specialty Products

With Convenient Locations in Wichita, Omaha, Denver, Kansas City, Lincoln, and Des Moines



Ductboard Tab-Lock



Gauge	Size	Part #	Qty Per Carton
	6"	6DTL	18EA
	8"	8DTL	24EA

Conical Twist-In Takeoff



Gauge	Size	Part #	Qty Per Carton
	6"	6CTW	18EA
	8"	8CTW	12EA
	10"	10CTW	12EA
	12"	12CTW	6EA

Conical Twist-In Takeoff w/Damper



Gauge	Size	Part #	Qty Per Carton
	6"	6CTWD	18EA
	8"	8CTWD	12EA
	8"	8CTWD	12EA
	10"	10CTWD	10EA
	12"	12CTWD	8EA

H/E Takeoff w/Damper



Gauge	Size	Part #	Qty Per Carton
	4"	4HETO	18EA
	6"	6HETO	18EA
	7"	7HETO	12EA
	8"	8HETO	12EA
	9"	9HETO	12EA
	10"	10HETO	10EA
	12"	12HETO	6EA
	14"	14HETO	6EA
	16"	16HETO	5EA

H/E Takeoff w/o Damper



Gauge	Size	Part #	Qty Per Carton
	4"	4HETOX	18EA
	6"	6HETOX	18EA
	8"	8HETOX	12EA
	10"	10HETOX	12EA
	12"	12HETOX	6EA
	14"	14HETOX	6EA

Manufacturer and Wholesaler of Sheet Metal, HVAC and Specialty Products

With Convenient Locations in Wichita, Omaha, Denver, Kansas City, Lincoln, and Des Moines



Gasketed H/E Takeoff w/o Damper



Gauge	Size	Part #	Qty Per Carton
	6"	G6HETOX	18EA
	10"	G10HETOX	12EA

H/E Takeoff w/Damper & Stand Off



Gauge	Size	Part #	Qty Per Carton
	6"	6HETOSTO	18EA
	7"	7HETOSTO	12EA
	8"	8HETOSTO	12EA
	10"	10HETOSTO	10EA
	12"	12HETOSTO	8EA
	14"	14HETOSTO	4EA

Gasketed H/E Takeoff w/Damper



Gauge	Size	Part #	Qty Per Carton
	6"	G6HETO	18EA
	8"	G8HETO	12EA
	10"	G10HETO	10EA
	12"	G12HETO	6EA

Gasketed H/E Takeoff w/Damper & Stand Off



Gauge	Size	Part #	Qty Per Carton
	6"	G6HETOSTO	18EA
	8"	G8HETOSTO	12EA
	10"	G10HETOSTO	10EA

Gasketed Conical Takeoff w/o Damper



Gauge	Size	Part #	Qty Per Carton
	6"	G6CTO	18EA
	8"	G8CTO	12EA
	12"	G12CTO	6EA

Gasketed Conical Takeoff w/Damper



Gauge	Size	Part #	Qty Per Carton
	6"	G6CTOD	18EA
	8"	G8CTOD	12EA
	10"	G10CTOD	6EA

Manufacturer and Wholesaler of Sheet Metal, HVAC and Specialty Products

With Convenient Locations in Wichita, Omaha, Denver, Kansas City, Lincoln, and Des Moines



Conical Twist-In w/Damper & Stand Off



Gauge	Size	Part #	Qty Per Carton
	6"	6CTWDSTO	18EA
	8"	8CTWDSTO	12EA
	10"	10CTWDSTO	8EA

Manufacturer and Wholesaler of Sheet Metal, HVAC and Specialty Products

With Convenient Locations in Wichita, Omaha, Denver, Kansas City, Lincoln, and Des Moines



Return Air Drop Kit

Gauge	Size	Part #	Qty Per Carton
	20"x10"	2010RAD	1EA
	25"x10"	2510RAD	1EA

Return Air Drop w/1" Filter Kit

Gauge	Size	Part #	Qty Per Carton
	25"x10"	L2510RAD	1EA
	20"x10"	L2010RAD	1EA

Return Air Frame



Gauge	Size	Part #	Qty Per Carton
	14"x6"	146RAF	80EA
	14"x8"	148RAF	
	24"x6"	246RAF	100EA
	30"x6"	306RAF	
	30"x8"	308RAF	

Return Air Boot



Gauge	Size	Part #	Qty Per Carton
	24"x16"	HCC16	
	24"x20"	HCC20	
	20-1/4" Sq, 6" Deep	2025RAB6	
	24"x12" w/20" Filter Slot	2412RAB20	

Return Air Angle



Gauge	Size	Part #	Qty Per Carton
	1"x60"	160RAA	



Filter Rack



Gauge	Size	Part #	Qty Per Carton
	20"x16"	2016FR	
	20"x20"	2020FR	
	25"x14"	2514FR	
	25"x20"	2520FR	
	25"x16"	2516FR	

Filter Rack for 1" or 5" Air Bear Filter



Gauge	Size	Part #	Qty Per Carton
	25"x16"	2516FRAB5	
	25"x20"	2520FRAB	

Support Base w/Filter Rack



Gauge	Size	Part #	Qty Per Carton
	30"x30"	SBF30	
	36"x30"	SBF36	

Manufacturer and Wholesaler of Sheet Metal, HVAC and Specialty Products

With Convenient Locations in Wichita, Omaha, Denver, Kansas City, Lincoln, and Des Moines



Plenum - Tall

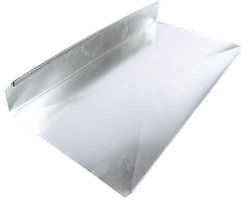
Gauge	Size	Part #	Qty Per Carton
	17"x19-1/2"x48"	171948PLEN	
	20-1/2"x17-1/2"x59-1/2"	205175595PLEN	

Plenum - Raw Both Ends

Gauge	Size	Part #	Qty Per Carton
	16"x20"x48"	162048PLENR	
	20"x20"x48"	202048PLENR	

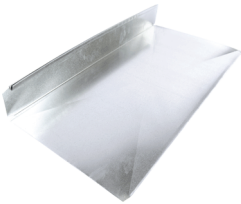


Wall Stack - L-Section - 2FT



Gauge	Size	Part #	Qty Per Carton
28GA	2-1/4"x12"	DLS2122WS	2FT
28GA	3-1/4"x10"	DLS3102WS	2FT
28GA	3-1/4"x12"	DLS3122WS	2FT
28GA	3-1/4"x14"	DLS3142WS	2FT

Wall Stack - L-Section - 8FT



Gauge	Size	Part #	Qty Per Carton
28GA	3-1/4"x8"	DLS388WS	8FT
28GA	3-1/4"x10"	DLS3108WS	8FT
28GA	3-1/4"x12"	DLS3128WS	8FT
28GA	3-1/4"x14"	DLS3148WS	8FT

Manufacturer and Wholesaler of Sheet Metal, HVAC and Specialty Products

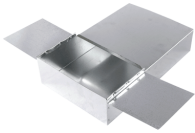
With Convenient Locations in Wichita, Omaha, Denver, Kansas City, Lincoln, and Des Moines



Wall Stack End Cap

Gauge	Size	Part #	Qty Per Carton
	3-1/4"x10"	310WSEC	
	3-1/4"x12"	312WSEC	
	3-1/4"x14"	314WSEC	

Wall Stack Head



Gauge	Size	Part #	Qty Per Carton
	3-1/4"x10"x6"	3106WSH	10EA

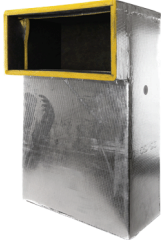
Wall Stack S&D End Cap



Gauge	Size	Part #	Qty Per Carton
	3-1/4"x10"	310WSSDEC	



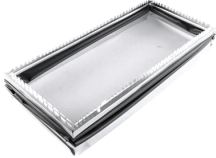
Ductboard Soundboot



Gauge	Size	Part #	Qty Per Carton
	12"x24"	1224SB	
	24"x24"	2424SB	

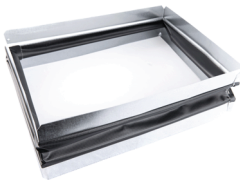


Straight Duct Starter Flex Connector



Gauge	Size	Part #	Qty Per Carton
	26"x10"	2610SDSFC	20EA
	26"x12"	2612SDSFC	16EA

Flex Connector Raw Ends - Knotched



Gauge	Size	Part #	Qty Per Carton
	16"x20"	1620FC	
	20"x14"	2014FC	
	20"x20"	2020FC	6EA
	25"x12"	2512FC	



Supply Plate



Gauge	Size	Part #	Qty Per Carton
	10"x4"	104SP	90EA
	10"x4" on 16" Center	104SP16C	90EA
	10"x6"	106SP	30EA
	12"x4"	124SP	100EA
	12"x6"	126SP	60EA

Manufacturer and Wholesaler of Sheet Metal, HVAC and Specialty Products

With Convenient Locations in Wichita, Omaha, Denver, Kansas City, Lincoln, and Des Moines



Dryer Vent w/Flap



Gauge	Size	Part #	Qty Per Carton
	3"	3DVF	35EA
	4"	4DVF	25EA
	6"	6DVF	20EA
	8"	8DVF	9EA
	10"	10DVF	4EA

Dryer Vent w/Screen



Gauge	Size	Part #	Qty Per Carton
	4"	4DVS	40EA
	5"	5DVS	32EA
	6"	6DVS	25EA
	8"	8DVS	12EA

Roof Dryer Vent w/Flap



Gauge	Size	Part #	Qty Per Carton
	4"	4DVFR	

Dryer Vent w/Flap less Extension



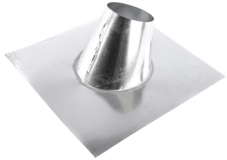
Gauge	Size	Part #	Qty Per Carton
	4"	4DVFXE	

Dryer Box

Gauge	Size	Part #	Qty Per Carton
	4"	4DB	14EA

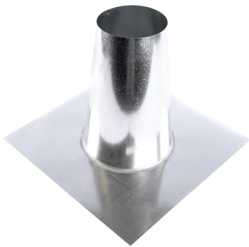


Universal Common Roof Flashing



Gauge	Size	Part #	Qty Per Carton
	3"	3UCRF	
	4"	4UCRF	
	6"	6UCRF	
	8"	8UCRF	

Flat Common Roof Flashing



Gauge	Size	Part #	Qty Per Carton
	4"	4FCRF	
	6"	6FCRF	
	8"	8FCRF	
	10"	10FCRF	

Manufacturer and Wholesaler of Sheet Metal, HVAC and Specialty Products

With Convenient Locations in Wichita, Omaha, Denver, Kansas City, Lincoln, and Des Moines

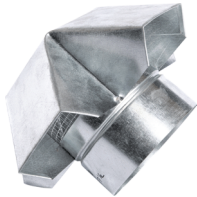


Pitch Top Cap w/Screen



Gauge	Size	Part #	Qty Per Carton
	3"	3PTC	50EA
	4"	4PTC	50EA
	5"	5PTC	25EA
	6"	6PTC	20EA
	8"	8PTC	14EA
	10"	10PTC	10EA
	12"	12PTC	4EA

Rain Cap w/Screen



Gauge	Size	Part #	Qty Per Carton
	4"	4RC	40EA
	5"	5RC	24EA
	6"	6RC	14EA



Galvanized Spiral Pipe - 26GA

Gauge	Size	Part #	Qty Per Carton
26GA	3"	3GSP26	10FT
26GA	4"	4GSP26	10FT
26GA	5"	5GSP26	10FT
26GA	6"	6GSP26	10FT
26GA	7"	7GSP26	10FT
26GA	8"	8GSP26	10FT
26GA	9"	9GSP26	10FT
26GA	10"	10GSP26	10FT
26GA	12"	12GSP26	10FT
26GA	14"	14GSP26	10FT

Galvanized Spiral Pipe - 24GA

Gauge	Size	Part #	Qty Per Carton
24GA	4"	4GSP24	10FT
24GA	5"	5GSP24	10FT
24GA	6"	6GSP24	10FT
24GA	7"	7GSP24	10FT
24GA	8"	8GSP24	10FT
24GA	10"	10GSP24	10FT
24GA	12"	12GSP24	10FT
24GA	14"	14GSP24	10FT
24GA	16"	16GSP24	10FT
24GA	18"	18GSP24	10FT
24GA	20"	20GSP24	10FT
24GA	22"	22GSP24	10FT
24GA	24"	24GSP24	10FT
24GA	26"	26GSP24	10FT
24GA	28"	28GSP24	10FT

Manufacturer and Wholesaler of Sheet Metal, HVAC and Specialty Products

With Convenient Locations in Wichita, Omaha, Denver, Kansas City, Lincoln, and Des Moines



Galvanized Spiral Pipe - 22GA

Gauge	Size	Part #	Qty Per Carton
22GA	4"	4GSP22	10FT
22GA	5"	5GSP22	10FT
22GA	6"	6GSP22	10FT
22GA	8"	8GSP22	10FT
22GA	14"	14GSP22	10FT
22GA	18"	18GSP22	10FT
22GA	24"	24GSP22	10FT
22GA	28"	28GSP22	10FT
22GA	30"	30GSP22	10FT
22GA	32"	32GSP22	10FT
22GA	34"	34GSP22	10FT
22GA	36"	36GSP22	10FT

Galvanized Spiral Pipe - 20GA

Gauge	Size	Part #	Qty Per Carton
20GA	7"	7GSP20	10FT
20GA	16"	16GSP20	10FT
20GA	18"	18GSP20	10FT
20GA	20"	20GSP20	10FT
20GA	24"	24GSP20	10FT
20GA	40"	40GSP20	10FT

Galvanized Spiral Pipe - 18GA

Gauge	Size	Part #	Qty Per Carton
18GA	14"	14GSP18	10FT
18GA	24"	24GSP18	10FT
18GA	36"	36GSP18	10FT



PVC Spiral Pipe - 26GA

Gauge	Size	Part #	Qty Per Carton
26GA	4"	4PVCSP26	10FT
26GA	5"	5PVCSP26	10FT
26GA	6"	6PVCSP26	10FT
26GA	8"	8PVCSP26	10FT

PVC Spiral Pipe - 24GA

Gauge	Size	Part #	Qty Per Carton
24GA	10"	10PVCSP24	10FT
24GA	12"	12PVCSP24	10FT
24GA	14"	14PVCSP24	10FT
24GA	16"	16PVCSP24	10FT

Paintlock Spiral Pipe - 24GA

Gauge	Size	Part #	Qty Per Carton
24GA	4"	4PSP24	
24GA	6"	6PSP24	
24GA	8"	8PSP24	
24GA	10"	10PSP24	
24GA	12"	12PSP24	
24GA	14"	14PSP24	
24GA	16"	16PSP24	
24GA	18"	18PSP24	
24GA	20"	20PSP24	
24GA	22"	22PSP24	
24GA	24"	24PSP24	
24GA	26"	26PSP24	

Paintlock Spiral Pipe - 22GA

Gauge	Size	Part #	Qty Per Carton
22GA	28"	28PSP22	
22GA	30"	30PSP22	
22GA	36"	36PSP22	



Galvanized Spiral Coupling



Gauge	Size	Part #	Qty Per Carton
26GA	4"	4GSC26	50EA
26GA	5"	5GSC26	60EA
26GA	6"	6GSC26	60EA
26GA	7"	7GSC26	36EA
26GA	8"	8GSC26	36EA
26GA	10"	10GSC26	32EA
26GA	12"	12GSC26	22EA
26GA	14"	14GSC26	22EA
24GA	16"	16GSC24	14EA
24GA	18"	18GSC24	12EA
24GA	20"	20GSC24	10EA
24GA	22"	22GSC24	8EA
24GA	24"	24GSC24	6EA
22GA	28"	28GSC22	5EA

Manufacturer and Wholesaler of Sheet Metal, HVAC and Specialty Products

With Convenient Locations in Wichita, Omaha, Denver, Kansas City, Lincoln, and Des Moines



Oval Pipe

Gauge	Size	Part #	Qty Per Carton
	6"x100"	110550	
	6"x115"	6X115POV	
	8"x115"	8X115POV	



Part #	Page	Part #	Page	Part #	Page	Part #	Page
1010A90	30	10X2P26	7	129PR	16	148/128T	36
1010B90	30	10X2P30	7	129TR	17	148A45	29
1010EC	32	10X5P24	5	12CTW	41	148A90	30
1010SDEC	33	10X5P26	5	12CTWD	41	148B45	29
104SP	51	10X5P30	5	12DBQ	9	148B90	30
104SP16C	51	110550	59	12E24	8	148EC	32
106SP	51	1120HS	27	12E26	8	148ODS	35
106TR	17	1120HS18	27	12E28	8	148RAF	44
107TR	17	1120HS20	27	12GSC26	58	148SDEC	33
1088WYE	18	1120HS22	27	12GSP24	55	148SDS	31
108A90	30	1120HS26	27	12GSP26	55	148TR	17
108B45	29	112112A16	27	12HETO	41	14DBQ	9
108B90	30	112112ANGLE18GA	27	12HETOSTO	42	14DV	26
108EC	32	112120HS	27	12HETOX	41	14E24	8
108ODS	35	120DV	26	12PC	15	14E26	8
108PR	16	120DV24	26	12PSP24	57	14E28	8
108SDEC	33	120SL	26	12PTC	54	14GSC26	58
108SDS	31	120SL24	26	12PVCSP24	57	14GSP18	56
108TR	17	121010WYE	18	12SIDE	20	14GSP22	56
1090ST	18	1210A45	29	12SL	26	14GSP24	55
109TR	17	1210A90	30	12TEE	18	14GSP26	55
10CTW	41	1210B45	29	12TOP	20	14HETO	41
10CTWD	41	1210B90	30	12TW	40	14HETOSTO	42
10CTWDSTO	43	1210EC	32	12TWD	40	14HETOX	41
10DBQ	9	1210PR	16	12WAC	38	14PC	15
10DVF	52	1210SDEC	33	12WACD	39	14PSP24	57
10E24	8	1210SDS	31	12WACL	38	14PVCSP24	57
10E26	8	1210TR	17	12WACS	39	14SIDE	20
10E28	8	1212A90	30	12X2P26	7	14SL	26
10FCRF	53	1212B90	30	12X2P30	7	14TEE	18
10GSC26	58	1212EC	32	12X5P24	5	14TOP	20
10GSP24	55	12212HCHNL	27	12X5P26	5	14TW	40
10GSP26	55	1224SB	49	12X5P30	5	14TWD	40
10HETO	41	1226SSL10	26	1410A45	29	14WAC	38
10HETOSTO	42	122ANGLE	27	1410A90	30	14WACD	39
10HETOX	41	122ANGLE96	27	1410B45	29	14WACL	38
10MVD	9	124SP	51	1410B90	30	14WACS	39
10PC	15	124SSL10	26	1410EC	32	14X2P26	7
10PSP24	57	126SP	51	1410SDEC	33	14X5P24	5
10PTC	54	126TR	17	1410SDS	31	14X5P26	5
10PVCSP24	57	128/108T	36	1410TR	17	160RAA	44
10SIDE	20	128A45	29	1412A45	29	1610A45	29
10SL	26	128A90	30	1412A90	30	1610A90	30
10TEE	18	128B45	29	1412B90	30	1610B45	29
10TTO	37	128B90	30	1412EC	32	1610B90	30
10TW	40	128EC	32	1412SDEC	33	1610EC	32
10TWD	40	128ODS	35	1412SDS	31	1610SDEC	33
10TWDS	40	128PR	16	1412TR	17	1610SDS	31
10WAC	38	128SDEC	33	1414EC	32	1610TR	17
10WACD	39	128SDS	31	145EC	32	1612B90	30
10WACL	38	128TR	17	146RAF	44	1612EC	32
10WACS	39	1290ST	18	148/108T	36	1612SDEC	33



Manufacturer and Wholesaler of Sheet Metal, HVAC and Specialty Products

With Convenient Locations in Wichita, Omaha, Denver, Kansas City, Lincoln, and Des Moines



Part #	Page	Part #	Page	Part #	Page	Part #	Page
1612TR	17	18E26	8	20PC	15	24GSP20	56
1614TR	17	18GSC24	58	20PSP24	57	24GSP22	56
162048PLENR	46	18GSP20	56	20SIDE	20	24GSP24	55
1620FC	50	18GSP22	56	20SL	26	24PSP24	57
168/128T	36	18GSP24	55	20TOP	20	24SL	26
168/148T	36	18PC	15	20WAC	38	24TOP	20
168A45	29	18PSP24	57	20WACL	38	2510EC	32
168A90	30	18SIDE	20	20X5P24	5	2510RAD	44
168B45	29	18SL	26	20X5P26	5	2510SDS	31
168B90	30	18TEE	18	2104AB	11	2512A90	30
168EC	32	18TOP	20	2104BB	13	2512EC	32
168ODS	35	18WAC	38	2104SB	12	2512FC	50
168SDEC	33	18WACL	38	2105AB	11	2512SDS	31
168SDS	31	18X2P26	7	2105BB	13	2514FR	45
16DBQ	9	18X5P24	5	2105SB	12	2516FR	45
16DV	26	18X5P26	5	2106AB	11	2516FRAB5	45
16E24	8	2010/1410T	36	2106BB	13	2520FR	45
16E26	8	2010/1610T	36	2106SB	12	2520FRAB	45
16GSC24	58	2010A45	29	210DR	34	25SL	26
16GSP20	56	2010A90	30	2125AB	11	2610EC	32
16GSP24	55	2010B45	29	2125BB	13	2610SDSFC	50
16HETO	41	2010B90	30	2125SB	12	2612EC	32
16PC	15	2010EC	32	2126AB	11	2612SDSFC	50
16PSP24	57	2010RAD	44	2126BB	13	26GSP24	55
16PVCSP24	57	2010SDEC	33	2126BBL (Left)	13	26PSP24	57
16SIDE	20	2010SDS	31	2126BBR (Right)	13	26SL	26
16SL	26	2012EC	32	2126SB	12	26TOP	20
16TEE	18	2014EC	32	2127SB	12	28DR	34
16TOP	20	2014FC	50	212A90	30	28GSC22	58
16WAC	38	2016EC	32	2146AB	11	28GSP22	56
16WACD	39	2016FR	45	2146SB	12	28GSP24	55
16WACL	38	2016TR	17	2210EC	32	28PSP22	57
16X2P26	7	202048PLENR	46	22ANGLE	27	28SL	26
16X5P24	5	2020EC	32	22GSC24	58	2S2448120	3
16X5P26	5	2020FC	50	22GSP24	55	2S2648120	3
171948PLEN	46	2020FR	45	22PSP24	57	306RAF	44
1741JP	19	2025RAB6	44	22SL	26	308RAF	44
1810B90	30	2041JP	19	22TOP	20	30GSP22	56
1810EC	32	205175595PLEN	46	2410A90	30	30PSP22	57
1810SDEC	33	208/148T	36	2410EC	32	30SL	26
1814TR	17	208/168T	36	2410SDEC	33	30TOP	20
1816TR	17	208A90	30	2410SDS	31	3105WSAB	14
188/148T	36	208B45	29	2412EC	32	3106WSAB	14
188A45	29	208B90	30	2412RAB20	44	3106WSBB	14
188A90	30	208EC	32	2412SDEC	33	3106WSH	48
188B45	29	208SDEC	33	2424SB	49	3106WSSB	14
188B90	30	20DV	26	2441JP	19	3107WSAB	14
188EC	32	20E24	8	246RAF	44	3107WSSB	14
188SDEC	33	20E26	8	248EC	32	3108WSSB	14
188SDS	31	20GSC24	58	248SDEC	33	310A90	30
18DV	26	20GSP20	56	24GSC24	58	310WSEC	48
18E24	8	20GSP24	55	24GSP18	56	310WSSDEC	48

Manufacturer and Wholesaler of Sheet Metal, HVAC and Specialty Products



With Convenient Locations in Wichita, Omaha, Denver, Kansas City, Lincoln, and Des Moines



Part #	Page	Part #	Page	Part #	Page	Part #	Page
3126WSAB	14	410DR	34	4GSP24	55	5GSP24	55
3126WSSB	14	4126AB	11	4GSP26	55	5GSP26	55
3127WSAB	14	4126BB	13	4HETO	41	5MVD	9
3127WSSB	14	4126SB	12	4HETOX	41	5PC	15
3128WSAB	14	4127AB	11	4MVD	9	5PTC	54
3128WSSB	14	4127BB	13	4PC	15	5PVCSP26	57
312WSEC	48	4127SB	12	4PSP24	57	5RC	54
3148WSAB	14	4128AB	11	4PTC	54	5TEE	18
3148WSSB	14	4128BB	13	4PVCSP26	57	5TOH	37
314WSEC	48	4128SB	12	4RC	54	5TTO	37
32GSP22	56	4146AB	11	4TEE	18	5TTOSL	38
3341JP	19	4146SB	12	4TOH	37	5TWDS	40
34GSP22	56	4147AB	11	4TTO	37	5WAC	38
36GSP18	56	4147SB	12	4TW	40	5WACD	39
36GSP22	56	4148AB	11	4TWD	40	5WACL	38
36PSP22	57	4148BB	13	4UCRF	53	5WACS	39
386WSAB	14	4148SB	12	4WAC	38	5X10P30	4
390ST	18	433VC	10	4WACD	39	5X2P24	7
3DVF	52	43PR	16	4WACL	38	5X2P26	7
3E26	8	43TR	17	4WACS	39	5X2P30	7
3E28	8	443VC	10	4X10P30	4	5X5P26	5
3E30	8	444VC	10	4X2P24	7	5X5P30	5
3GSP26	55	45A108	14	4X2P26	7	60DV	26
3PC	15	45A1210	14	4X2P28	7	60SL	26
3PTC	54	45A65	14	4X2P30	7	6105AB	11
3UCRF	53	45A66	14	4X5P26	5	6105SB	12
3WAC	38	45A86	14	4X5P28	5	6106AB	11
3X10P30	4	45A87	14	4X5P30	5	6106BB	13
3X2P26	7	47C168/1310T2R	36	53TR	17	6106SB	12
3X2P28	7	47C188/1510T2R	36	543VC	10	6107AB	11
3X2P30	7	47C208/1810T2R	36	544VC	10	6107SB	12
3X5P26	5	484AB	11	54PR	16	6108AB	11
3X5P28	5	484SB	12	54S107	14	6108SB	12
3X5P30	5	485SB	12	54S108	14	6126AB	11
40GSP20	56	486AB	11	54S1210	14	6126SB	12
4104AB	11	486SB	12	54S128	14	6127AB	11
4104BB	13	48DR	34	54S1410	14	6127BB	13
4104SB	12	490ST	18	54S1412	14	6127SB	12
4105AB	11	4DB	52	54S65	14	6128AB	11
4105BB	13	4DBQ	9	54S66	14	6128BB	13
4105SB	12	4DPS	9	54S86	14	6128SB	12
4106AB	11	4DVF	52	54S87	14	6146SB	12
4106BB	13	4DVFR	52	54TR	17	6147SB	12
4106BBL (Left)	13	4DVFXE	52	590ST	18	6148AB	11
4106BBR (Right)	13	4DVS	52	5DBQ	9	6148BB	13
4106SB	12	4E24	8	5DVS	52	6148SB	12
4107AB	11	4E26	8	5E24	8	63TR	17
4107BB	13	4E28	8	5E26	8	643VC	10
4107SB	12	4E30	8	5E28	8	644VC	10
4108AB	11	4FCRF	53	5E30	8	64PR	16
4108BB	13	4GSC26	58	5GSC26	58	64TR	17
4108SB	12	4GSP22	56	5GSP22	56	654VC	10



Manufacturer and Wholesaler of Sheet Metal, HVAC and Specialty Products

With Convenient Locations in Wichita, Omaha, Denver, Kansas City, Lincoln, and Des Moines



Part #	Page	Part #	Page	Part #	Page	Part #	Page
65PR	16	6X2P26	7	876WYE	18	8X2P24	7
65TR	17	6X2P28	7	87TR	17	8X2P26	7
664VC	10	6X2P30	7	886WYE	18	8X2P30	7
666WYE	18	6X5P24	5	888WYE	18	8X5P24	5
686AB	11	6X5P26	5	88A45	29	8X5P26	5
686SB	12	6X5P28	5	88A90	30	8X5P30	5
690ST	18	6X5P30	5	88EC	32	96DV	26
6CTW	41	74TR	17	88ODS	35	96SL	26
6CTWD	41	755WYE	18	88SDEC	33	977WYE	18
6CTWDSTO	43	75TR	17	88SDS	31	97TR	17
6DBQ	9	764VC	10	890ST	18	985WYE	18
6DBQDE	9	76PR	16	8CTW	41	986WYE	18
6DPS	9	76TR	17	8CTWD	41	98TR	17
6DTL	41	790ST	18	8CTWDSTO	43	990ST	18
6DTW	40	7DBQ	9	8DBQ	9	9E24	8
6DTWD	40	7E24	8	8DTL	41	9E26	8
6DVF	52	7E26	8	8DTW	40	9E28	8
6DVS	52	7E28	8	8DTWD	40	9GSP26	55
6E24	8	7E30	8	8DVF	52	9HETO	41
6E26	8	7GSC26	58	8DVS	52	9PC	15
6E28	8	7GSP20	56	8E24	8	9WAC	38
6E30	8	7GSP24	55	8E26	8	9WACL	38
6FCRF	53	7GSP26	55	8E28	8	9X2P24	7
6GSC26	58	7HETO	41	8E30	8	9X2P26	7
6GSP22	56	7HETOSTO	42	8FCRF	53	9X5P26	5
6GSP24	55	7MVD	9	8GSC26	58	9X5P30	5
6GSP26	55	7PC	15	8GSP22	56	A02548120	3
6HETO	41	7TEE	18	8GSP24	55	A03248120	3
6HETOSTO	42	7TOH	37	8GSP26	55	A04048120	3
6HETOX	41	7TTO	37	8HETO	41	B10X10P30	4
6MVD	9	7TTOSL	38	8HETOSTO	42	B10X5P26	6
6PC	15	7TW	40	8HETOX	41	B10X5P28	6
6PCC	15	7TWD	40	8MVD	9	B12X5P26	6
6PSP24	57	7WAC	38	8PC	15	B12X5P28	6
6PTC	54	7WACD	39	8PCC	15	B3X10P28	4
6PVCSP26	57	7WACL	38	8PSP24	57	B3X5P26	6
6RC	54	7WACS	39	8PTC	54	B3X5P28	6
6TEE	18	7X10P30	4	8PVCSP26	57	B4X10P28	4
6TOH	37	7X2P24	7	8SIDE	20	B4X5P26	6
6TTO	37	7X2P26	7	8SL	26	B4X5P28	6
6TTOSL	38	7X2P28	7	8TEE	18	B5X10P28	4
6TW	40	7X2P30	7	8TTO	37	B5X5P26	6
6TWD	40	7X5P26	5	8TTOSL	38	B5X5P28	6
6TWDS	40	7X5P30	5	8TW	40	B6X10P28	4
6UCRF	53	8128AB	11	8TWD	40	B6X5P26	6
6WAC	38	8128SB	12	8TWDS	40	B6X5P28	6
6WACD	39	8148SB	12	8UCRF	53	B7X10P28	4
6WACL	38	84TR	17	8WAC	38	B7X5P26	6
6WACS	39	85TR	17	8WACD	39	B7X5P28	6
6X10P30	4	866WYE	18	8WACL	38	B8X10P28	4
6X115POV	59	86PR	16	8WACD	39	B8X10P30	4
6X2P24	7	86TR	17	8WACS	39	B8X5P26	6
				8X115POV	59		

Manufacturer and Wholesaler of Sheet Metal, HVAC and Specialty Products



With Convenient Locations in Wichita, Omaha, Denver, Kansas City, Lincoln, and Des Moines



Part #	Page	Part #	Page	Part #	Page	Part #	Page
B8X5P28	6	DLS1888	24	G1660120G90	2	G4TOD	37
B9X10P30	4	DLS20105	22	G16TO	37	G5TO	37
B9X5P26	6	DLS20108	24	G16TOD	37	G5TOD	37
B9X5P28	6	DLS20125	22	G1848120G90	2	G6CTO	42
CR1648120	3	DLS20145	22	G184896G90	2	G6CTOD	42
DLS10105	22	DLS205104	21	G1860120G90	2	G6HETO	42
DLS10108	24	DLS205108	24	G18TO	37	G6HETOSTO	42
DLS1084	21	DLS2082	20	G18TOD	37	G6HETOX	42
DLS1085	22	DLS2085	22	G2048120	1	G6TO	37
DLS1085G26	22	DLS2088	24	G2048120G90	2	G6TOD	37
DLS1088	24	DLS2122WS	47	G204896	1	G7TO	37
DLS12105	22	DLS22105	22	G204896G90	2	G8CTO	42
DLS12108	24	DLS22125	22	G2060120	1	G8CTOD	42
DLS12125	22	DLS2282	20	G2060120G90	2	G8HETO	42
DLS12128	24	DLS2285	22	G223696	1	G8HETOSTO	42
DLS125104	21	DLS24105	22	G2248120	1	G8TO	37
DLS125108	24	DLS24108	24	G2248120G90	2	G8TOD	37
DLS1284	21	DLS24145	22	G224896	1	G9TO	37
DLS1285	22	DLS2485	22	G224896G90	2	H122ANGLE10FT	27
DLS1285G26	22	DLS2488	24	G2260120	1	HCC16	44
DLS1288	24	DLS25103	20	G2260120G90	2	HCC20	44
DLS14104	21	DLS25105	22	G2436120	1	L2010RAD	44
DLS14105	22	DLS25125G26	22	G243696	1	L2510RAD	44
DLS14105G26	22	DLS26103	20	G2448120	1	LDLS10105	28
DLS14108	24	DLS26104	21	G2448120G90	2	LDLS1085	28
DLS14124	21	DLS26123	20	G244896	1	LDLS12105	28
DLS14125	22	DLS26124	21	G244896G90	2	LDLS14105	28
DLS14125G26	22	DLS30105	22	G2460120	1	LDLS1485	28
DLS14144	21	DLS3085	22	G2460120G90	2	LDLS16105	28
DLS145128	24	DLS3102WS	47	G262496	1	LDLS18105	28
DLS14584	21	DLS3108WS	47	G263096	1	LDLS20105	28
DLS14588	24	DLS3122WS	47	G2636120	1	LDLS24105	28
DLS1482	20	DLS3128WS	47	G263696	1	P2248120	3
DLS1484	21	DLS3142WS	47	G2648120	1	P2260120	3
DLS1485	22	DLS3148WS	47	G2648120G90	2	P2448120	3
DLS1485G26	22	DLS388WS	47	G264896	1	RDLS10105	23
DLS1488	24	DLS885	22	G264896G90	2	RDLS10108	25
DLS16105	22	DLS888	24	G2660120	1	RDLS1065	23
DLS16108	24	G10CTOD	42	G2660120G90	2	RDLS1085	23
DLS16125	22	G10HETO	42	G281636	1	RDLS1088	25
DLS165104	21	G10HETOSTO	42	G281696	1	RDLS12105	23
DLS165108	24	G10HETOX	42	G282296	1	RDLS12108	25
DLS165128	24	G10TO	37	G282496	1	RDLS12125	23
DLS1685	22	G10TOD	37	G282696	1	RDLS1285	23
DLS1688	24	G12CTO	42	G282896	1	RDLS1288	25
DLS18105	22	G12HETO	42	G283096	1	RDLS14105	23
DLS18108	24	G12TO	37	G283248	1	RDLS14108	25
DLS18125	22	G12TOD	37	G283296	1	RDLS14125	23
DLS185104	21	G14TO	37	G2836120	1	RDLS1485	23
DLS185108	24	G14TOD	37	G283696	1	RDLS1488	25
DLS1882	20	G1648120G90	2	G284896	1	RDLS16105	23
DLS1885	22	G164896G90	2	G4TO	37	RDLS16108	25



Manufacturer and Wholesaler of Sheet Metal, HVAC and Specialty Products

With Convenient Locations in Wichita, Omaha, Denver, Kansas City, Lincoln, and Des Moines



Part #	Page
RDLS16145	23
RDLS1668	25
RDLS1685	23
RDLS1688	25
RDLS1751755	23
RDLS18105	23
RDLS18108	25
RDLS1885	23
RDLS1888	25
RDLS1951955	23
RDLS20105	23
RDLS20108	25
RDLS20125	23
RDLS20128	25
RDLS20145	23
RDLS20148	25
RDLS2085	23
RDLS2088	25
RDLS22105	23
RDLS22108	25
RDLS22128	25
RDLS2285	23
RDLS2288	25
RDLS24105	23
RDLS24108	25
RDLS24125	23
RDLS2485	23
RDLS2488	25
RDLS25108	25
RDLS25125	23
RDLS2512824	25
RDLS25168	25
RDLS885	23
RDLS888	25
SBF30	45
SBF36	45

Manufacturer and Wholesaler of Sheet Metal, HVAC and Specialty Products



With Convenient Locations in Wichita, Omaha, Denver, Kansas City, Lincoln, and Des Moines